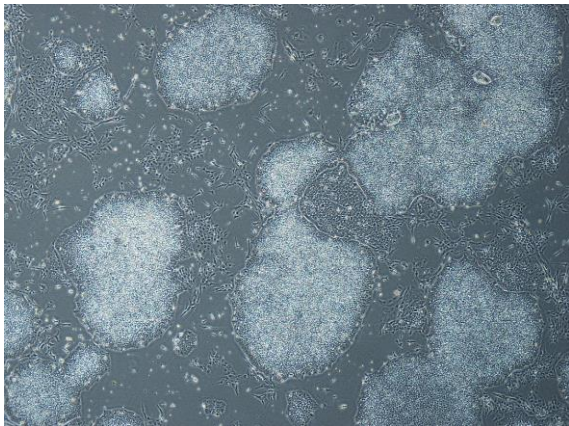
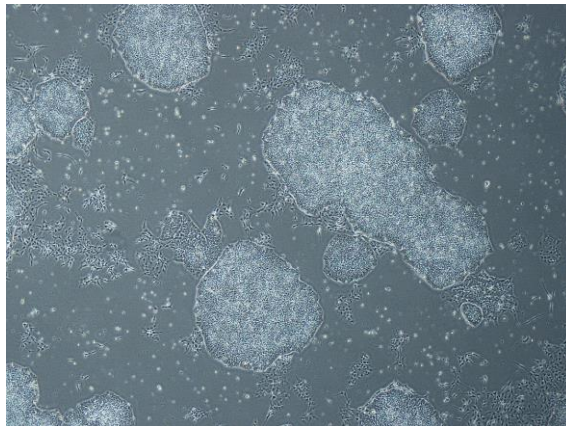


【 CiRA-j-1352 】 Morphology of iPSC colonies

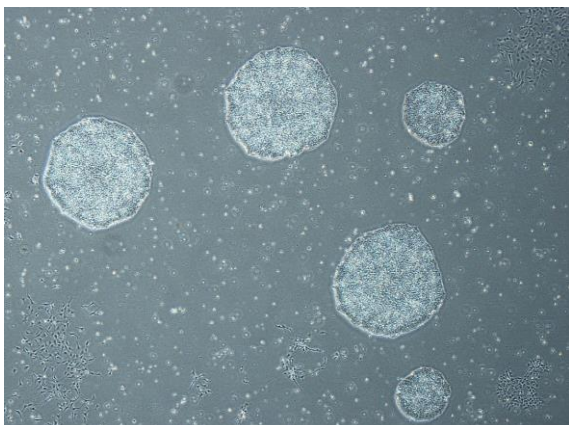
CiRA-j-1352-A: passage-4



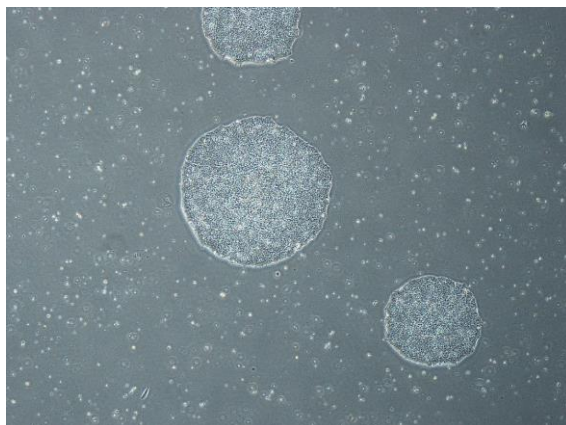
CiRA-j-1352-B: passage-4



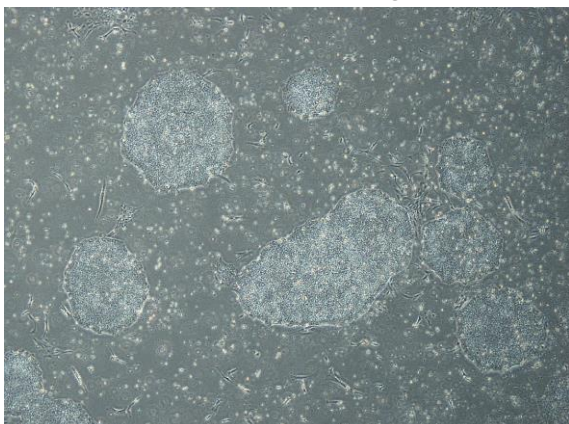
CiRA-j-1352-C: passage-3



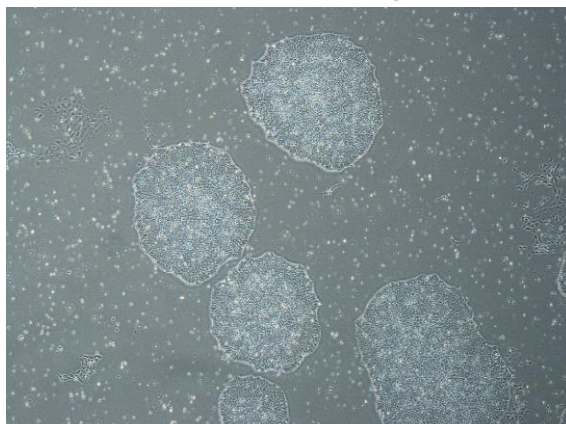
CiRA-j-1352-D: passage-3



CiRA-j-1352-E: passage-4



CiRA-j-1352-F: passage-4



(All images were captured at 4x magnification)